



SPECIFICATIONS

SS-EASY-LINK-V2

Intelligent Programmer

Model: SS-EASY-LINK-V2

Description:
Intelligent Programmer for LED
Driver Power Supplies

Rev.: V00

Release date: 2026-05-07



Intelligent Programmer for LED Driver Power Supplies

Features

- Input/Output Isolation
- Online programming, offline programming
- B head USB input
- Warranty 2 years

Description

After connecting the LED driver, power on the programmer. You can operate the LED driver using the three buttons: “-”, “+”, and “P”:

1. To make incremental adjustments to the current, press and hold the “+” button for 3 seconds until you hear a beep—this indicates that the fine-tuning function has been unlocked. Otherwise, the fine-tuning function is disabled. If no fine-tuning operations are performed within 15 seconds, the function will be locked (current fine-tuning is disabled). To use fine-tuning, you must re-enable the function. Fine-tuning is only available for 3-in-1 dimming products;
2. Press the “-” button to decrease the output current by up to 5%. A single press reduces the current by 0.4% of the LED driver’s maximum output current;
3. Press the “+” button to increase the output current by up to 5%; a single press increases the current by 0.4% of the LED driver’s maximum output current;
4. Press the “P” button for offline programming. This allows you to write the model information stored in the programmer into the LED driver and modify the LED driver’s settings. When using offline programming, the model number in the programmer must match the LED driver’s model number.

Input Characteristics	Min.	Typ.	Max.	Remark
Rated AC Input Range	4.7Vdc	5Vdc	5.3Vdc	Standard USB port
Input Current			0.6A	Three-wire communication
			0.2A	Secondary Communication

Output Characteristics	Min.	Typ.	Max.	Remark
O/P Voltage Range	0V		24V	3-in-1 (2-wire), DALI, D4i
	0V		13V	3-in-1 (3-wire)
	-6V		6V	DMX、485
Short circuit/overcurrent protection				Driver will not be damaged

Intelligent Programmer for LED Driver Power Supplies

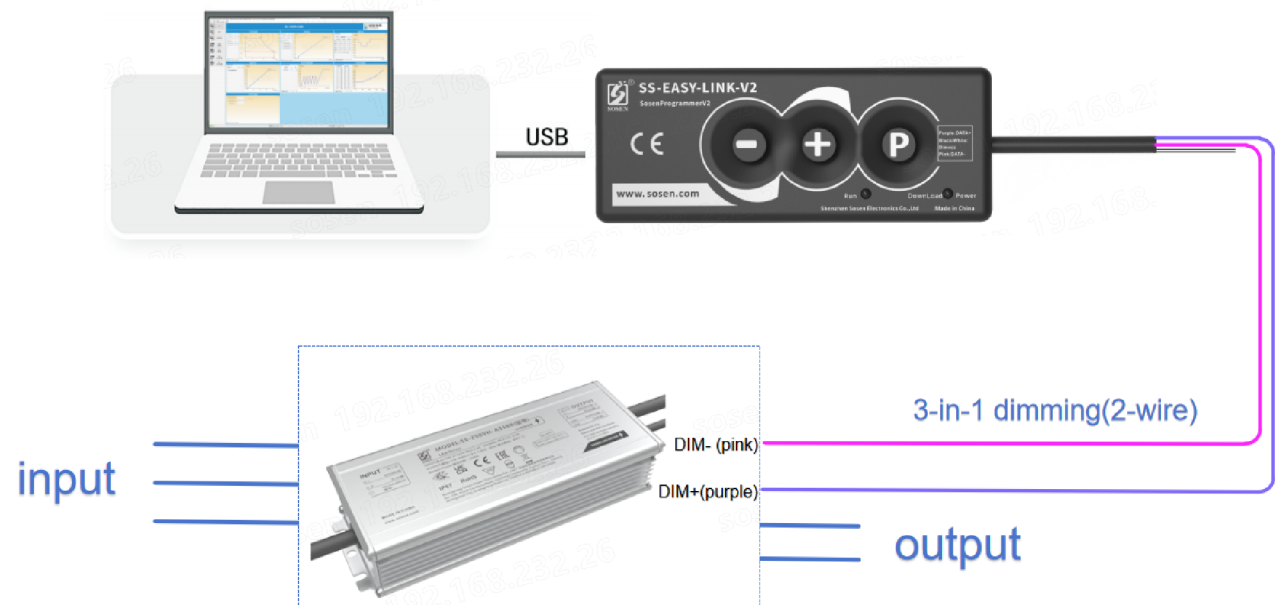
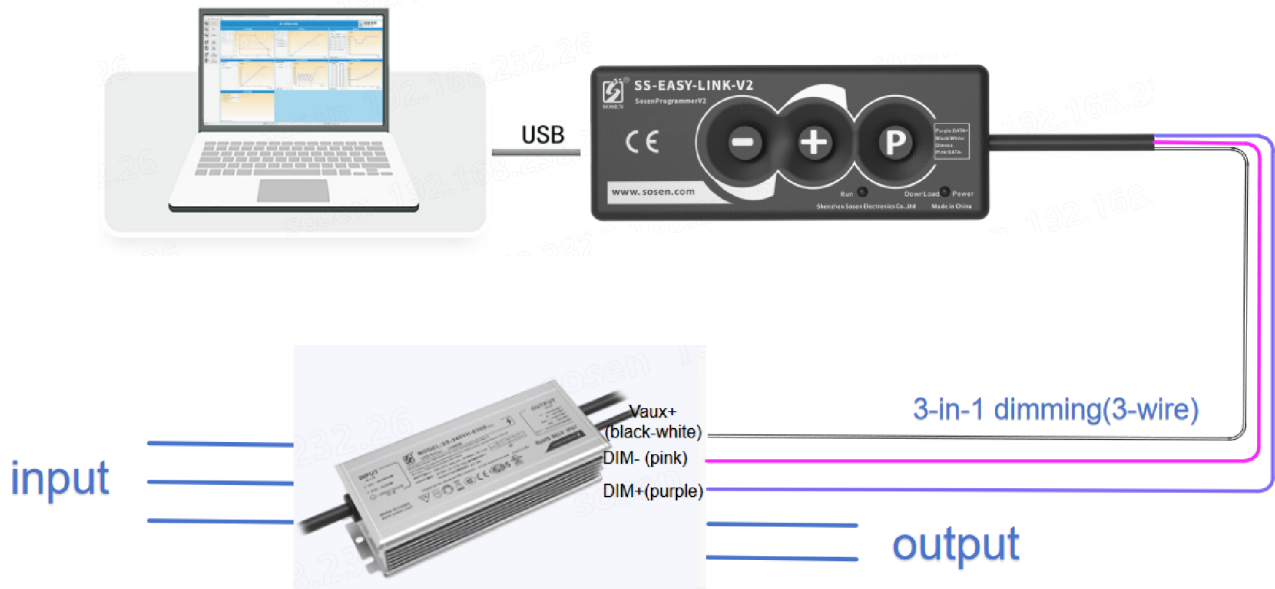
Environmental Requirements	Min.	Typ.	Max.	Remark
Operating Temperature (Ta)	-20°C	25°C	+60°C	
Storage Temperature	-20°C	25°C	+85°C	
Operation Humidity	10%RH		90%RH	
Storage Humidity	5%RH		95%RH	
Altitude			3000m	

Note:

1. All performance parameters are typical values measured at 25°C, unless otherwise specified.

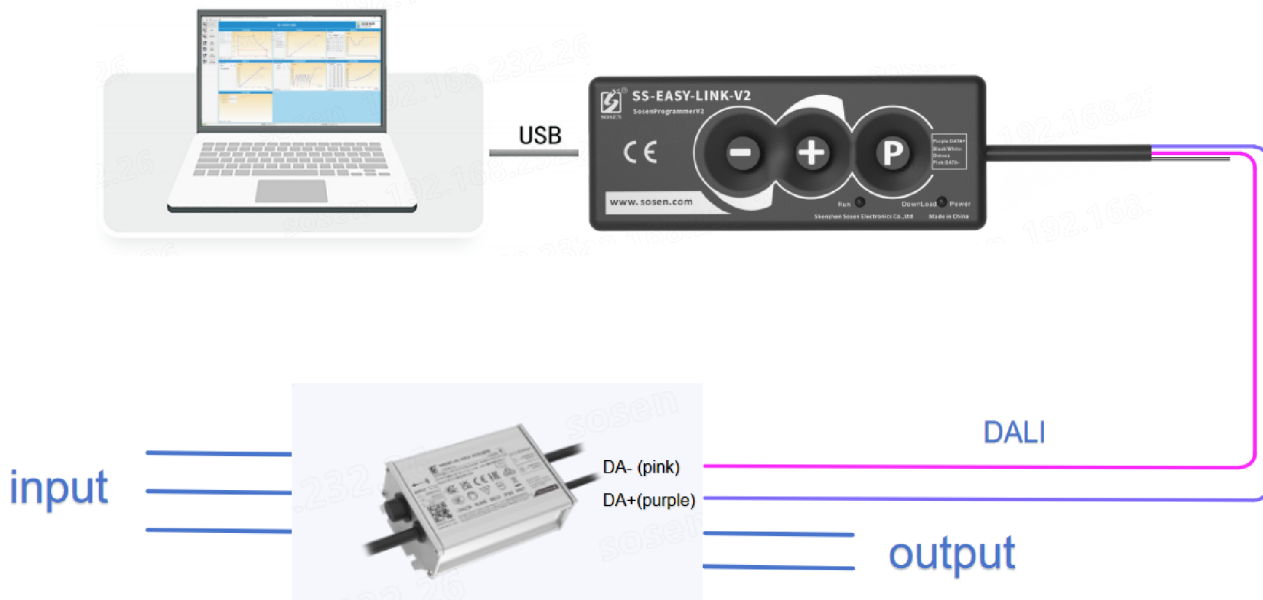
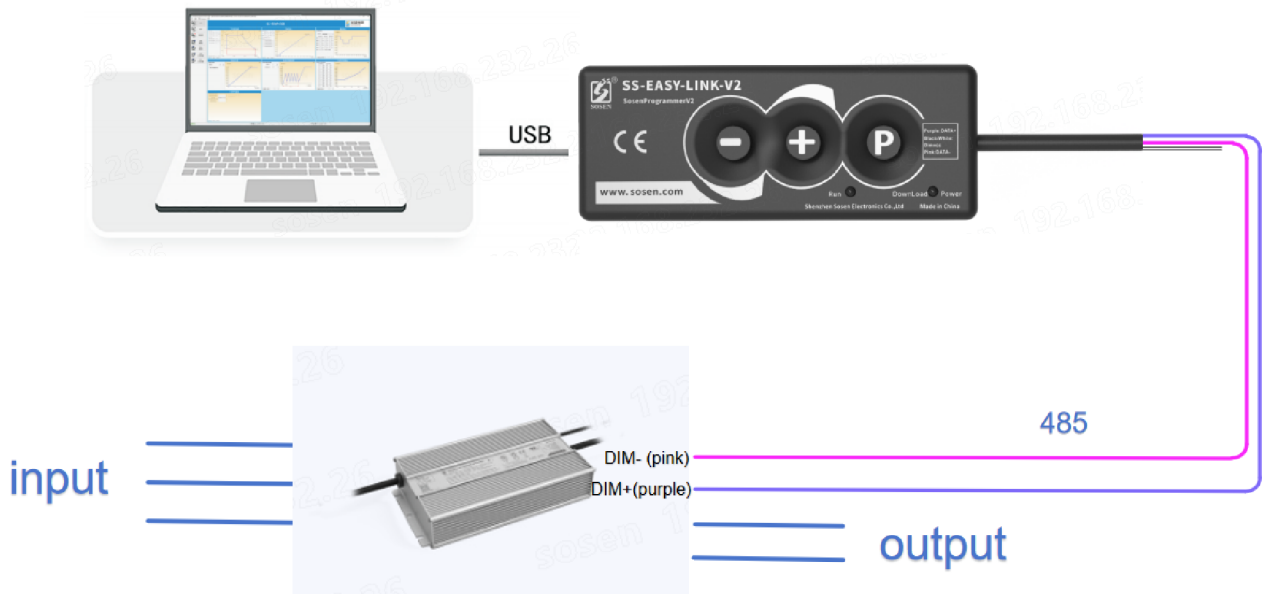
Intelligent Programmer for LED Driver Power Supplies

Programming connection diagram(3-in-1)



Intelligent Programmer for LED Driver Power Supplies

Programming connection diagram(485、DALI)



Intelligent Programmer for LED Driver Power Supplies

Package

- Outside carton dimension: L×W×H =125mm×105mm×35mm;
- 1PCS/Carton;
- Net weight/Piece: 80g;Whole machine with outer package: 150g.

Transportation

Packaging is designed suitable for transportation by trucks, vessels and flights. The products should be avoided direct sunlight and rain, loaded/unloaded with caution.

Storage

The product storage meets the standard of the GB 3873—83.
Products should be rechecked if stored for over 1 year before assembly.

RoHS

The product complies with European Directive 2011/65/EC.

Revision History

Version	Description of Update	Updated Date	Remark
V00	Original Release	2026/05/07	